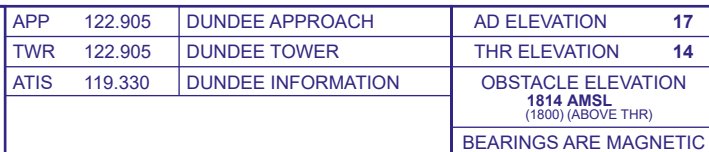
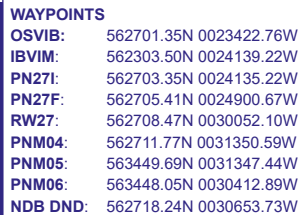


**DUNDEE
RNP
RWY 27**
(ACFT CAT A,B,C)



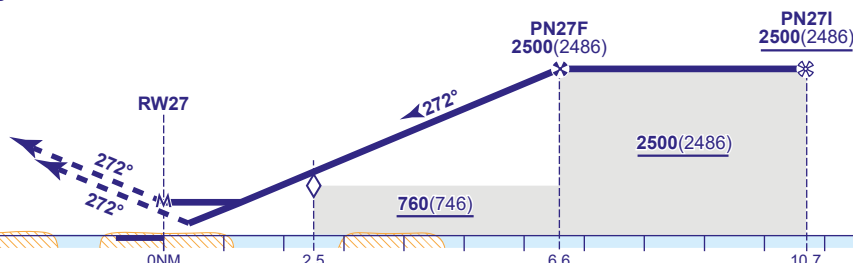
TRANSITION ALTITUDE
3000



RECOMMENDED PROFILE Gradient 6.12%, 372FT/NM

TCH 40	NDB(I) \ DND
--------	--------------

Continuous climb to **3000**.
Initially climb straight ahead
to **PNM04**, then turn right to
PNM05 and **PNM06** towards
NDB(L) DND to join the hold.
(see note 2 and 3)



Aircraft Category		A	B	C	UNM	Rate of descent	2.5	6.6	10.7			
OCA (OCH)	LNAV	680(666)	680(666)	680(666)			G/S KT	160	140	120	100	80
							FT/MIN	990	870	740	620	500
VM(C)OCA (OCH AAL)	Total Area	970(953)	970(953)	1170(1153)								
	South of RWY 09/27	690(673)	750(733)	1080(1063)								

NOTE 1 NDB(L) DND is 3.3NM from THR RWY 27 and is offset 230M north of extended RWY C/L.
2 Missed approach MAX 185KIAS.
3 Missed approach reverts to conventional navigation to hold at NDB(L) DND.

CHANGE (4/24): EGR612 WITHDRAWN.